

Paddlewheel Flow Sensor

FMPV SERIES



LIQUID



OVERVIEW

Operation

The simple and reliable paddlewheel technology has been moved into this new sensor type FMPV, designed for use with very kind of solid-free liquids.

Application

- Pharmaceutical industry
- Chemical processes
- Mechanical engineering
- Waste water treatment equipment
- Water based cooling systems
- Water treatment industry
- Textile sector
- Drinking water and spring water production sector
- Liquid Filling Machines
- Water distribution processing and manufacturing industry
- Filtration Systems

Features

- Durable and light weight design
- High sensitivity
- Resistant to chemical fluids
- Easy to install
- High accuracy
- Exclusive interior design
- Adjustable pulse output
- Shorter straight pipe

OPERATING DATA

Working Pressure	10 bar max.
Temperature Limit	70°C max.
Accuracy	±1 % of full scale
Repeatability	0.5% of full scale
Min Reynolds Number	4500
Enclosure	IP65 IP67 or IP68 on request

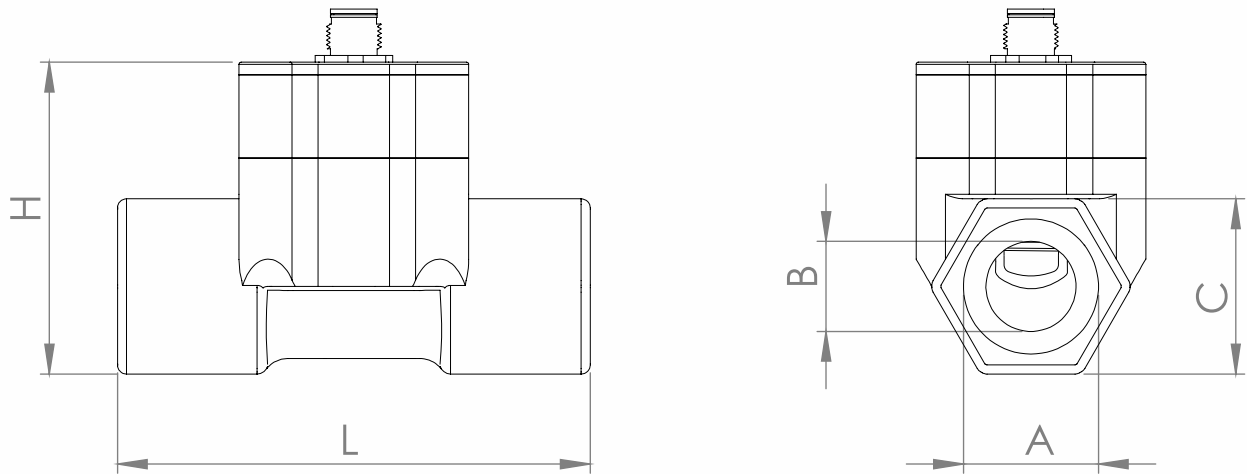
MEASURING RANGES

Pipe Size Range	1/2" ...2"
Flow Rate Range	3 l/min to 600 l/min

MATERIALS

Body	PVC, PP
O-rings	FPM
Rotor	PTFE
Shaft	Ceramic

TECHNICAL DRAWINGS AND DIMENSIONS



Size	A	B	C	H	L
DN15	G 1/2"	10	28	61	89
DN20	G 3/4"	14	32	62	89
DN25	G 1"	20	39	69	105
DN32	G 1 1/4"	25	48	75	129
DN40	G 1 1/2"	32	55	83	129
DN50	G 2"	40	66	92	150

*Unit is mm

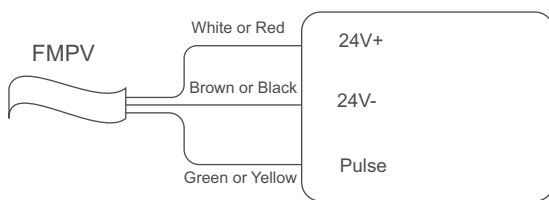
FLOW RANGES

Size	Range (l/min)
FMPV.015	3...37
FMPV.020	5...85
FMPV.025	10...150
FMPV.032	15...235
FMPV.040	25...387
FMPV.050	40...600

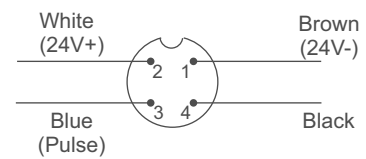
ELECTRICAL DATA

Signal Output	Pulse (push-pull) 4...20 mA or 0...10 V DC on request
Power Supply	24±10% V DC, regulated
Electrical Connection	1 m cable M12 connector or DIN43650A socket on request

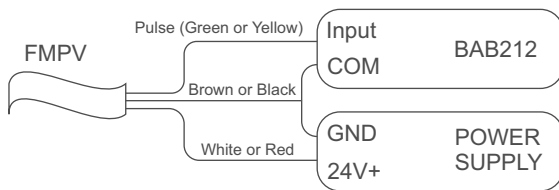
WIRING



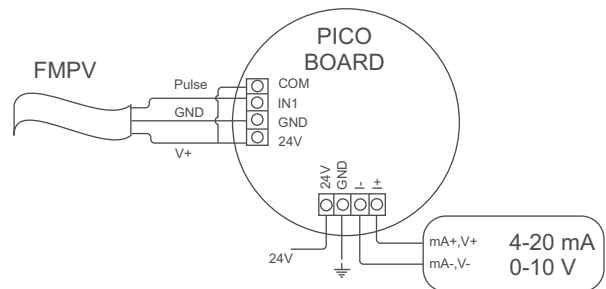
Pulse



With M12 Connector



With BAB212



Sensor and PICO Board Connection

OPTIONS, ELECTRONIC

BAB212

Selectable Inputs	4-20 mA,0-10VDC,0-5VDC,Pulse (PNP,NPN)
Operating Media	Liquids
Selectable Outputs	4-20 mA , 0-10VDC and Pulse
Communication	RS485-MODBUS (HART on request)
Analog Input Resolution	10 bit
Digital Input Speed	10 KHz, max
Digital Output Speed	50 Hz max
Display	TFT, 4.3" 480x272 pixel resistive touchscreen
Humidity	%10...85 non-condensate
Power Supply	24 VDC, ±%10
Power Consumption	3 W
Dimensions	144 x 144 mm (front) ,134 x 134 mm (rear), depth 100 mm
Enclosure	IP65 (front) , IP66 , IP67 on request



ORDERING

FMPV			Paddlewheel Flow Sensor
Connection Size	015		G 1/2"
	020		G 3/4"
	025		G 1"
	032		G 1 1/4"
	040		G 1 1/2"
	050		G 2"
Body	01	PVC	
	02	PP	
Output	01	Pulse	
	02	4...20 mA	
	03	0-10 V DC	
Display	N	None	
	B	BAB212 (remote)	