

Gear Flowmeter

GODF SERIES



LIQUID



OVERVIEW

Operation

Gear flowmeter provide precise volumetric measurement of small flow and of liquid or low flows. Gear flowmeters have higher resolution and lower pressure loss than oval gear flowmeter. They have same principle with oval gear flowmeters but with higher speed and able to be tested on higher viscosity.

It uses mechanical measuring elements to continuously divide the fluid into a single known volume part, and measures the total flow volume based on the number of times the metering chamber fills and discharges the volume portion of the fluid one by one.

Application

- Automotive
- Aviation
- Power,chemical,pharmaceutical,food industries
- Petroleum
- Mechanical engineering
- Dispensing machine injector test bench
- Adhesive foaming agent
- Hydraulic leak

Features

- High accuracy 0.5 % F.S
- Wide range 1:500
- Min flow 0.005L/min
- Ball/PEEK bear for more applications
- Pulse Output
- Low pressure loss and fast response
- Customized high tem..and pressure
- Max resolution 0.015p/min

OPERATING DATA

Temperature Limit	-30°C...+80°C standard model 120°C and 160°C on request
Max Pressure	50 Bar (standard) 400 Bar on request
Accuracy	±0,5 F.S ±0,2 F.S on request

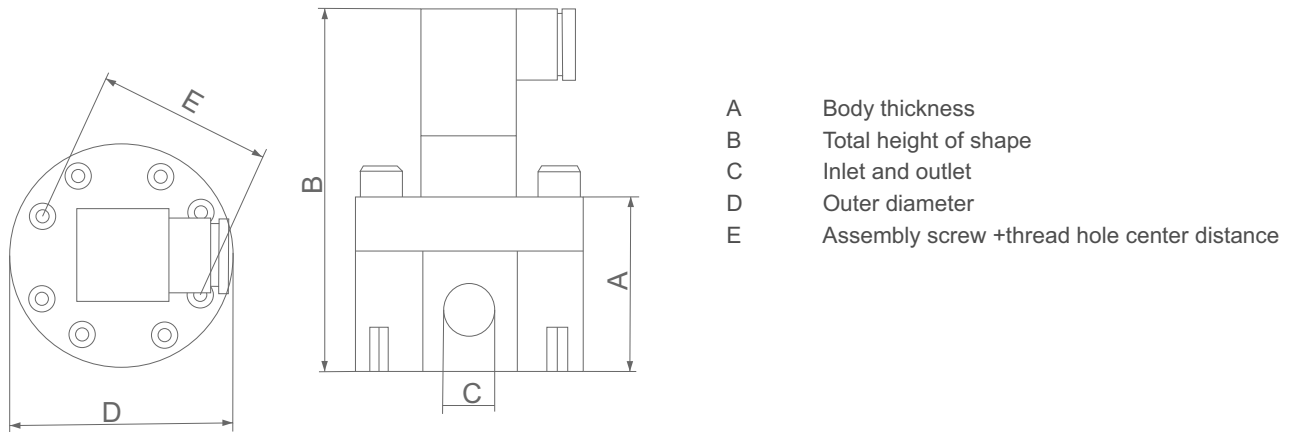
MEASURING RANGES

Flow Range	5 cc/min to 120 l/min
-------------------	-----------------------

MATERIALS

Body	SS316L, Aluminum
Gear	SS316L

TECHNICAL DRAWINGS AND DIMENSIONS

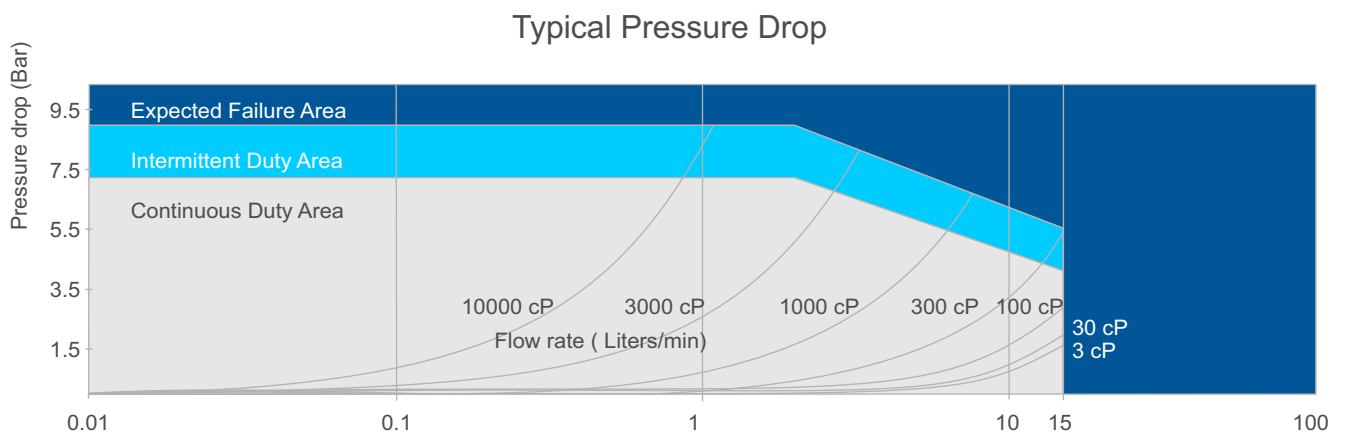


GODF series

Item	001	002	003	005	006	007	008
A (mm)	30	30	36	46	56	44	54
B (mm)	65	65	71	82	91	79	89
C (mm)	G1/8	G1/8	G1/4	G3/8	G1/2	G1/2	G3/4
D (mm)	64	64	79	79	79	99	99
E (mm)	42	42	74	74	69	90	90

GODF-series parameters list

Code	K coefficient	Connection size	Start Flow	Flow range	Gear material	Shell material
GODF.001	0.015 mL/P	G1/8	0.001 mL/P	0.005-0,5 L/min	SS316L	SS/AL
GODF.002	0.025 mL/P	G1/8	0.001 mL/P	0.004-2 L/min	SS316L	SS/AL
GODF.003	0.04 mL/P	G1/4	0.004 mL/P	0.01-4 L/min	SS316L	SS/AL
GODF.004	0.1 mL/P	G1/4	0.008 mL/P	0.02-8 L/min	SS316L	SS/AL
GODF.005	0.245 mL/P	G3/8	0.01 mL/P	0.08-16 L/min	SS316L	SS/AL
GODF.006	0.4 mL/P	G1/2	0.01 mL/P	0.1-40 L/min	SS316L	SS/AL
GODF.007	1 mL/P	G1/2	0.02 mL/P	0.2-80 L/min	SS316L	SS/AL
GODF.008	2 mL/P	G3/4	0.04 mL/P	0.5-120 L/min	SS316L	SS/AL



ELECTRICAL DATA

Output

Pulse(NPN or PNP)

4-20 mA, RS485-MODBUS, HART on request

Power Supply

5...24 VDC

OPTIONS, ELECTRONIC

BAB212

Selectable Inputs	4-20 mA,0-10VDC,0-5VDC,Pulse (PNP,NPN)
Operating Media	Liquids
Selectable Outputs	4-20 mA , 0-10VDC and Pulse
Communication	RS485-MODBUS (HART on request)
Analog Input Resolution	10 bit
Digital Input Speed	10 KHz, max
Digital Output Speed	50 Hz max
Display	TFT, 4.3" 480x272 pixel resistive touchscreen
Humidity	%10...85 non-condensate
Power Supply	24 VDC, ±%10
Power Consumption	3 W
Dimensions	144 x 144 mm (front) ,134 x 134 mm (rear), depth 100 mm
Enclosure	IP65 (front) , IP66 , IP67 on request



ORDERING

GODF				Gear Flowmeter	
Flow Range	001				0.005-0.5 L/min, G1/8 connection
	002				0.004-2 L/min, G1/8 connection
	003				0.01-4 L/min, G1/4 connection
	004				0.02-8 L/min, G1/4 connection
	005				0.08-16 L/min, G3/8 connection
	006				0.1-40 L/min, G1/2 connection
	007				0.2-80 L/min, G1/2 connection
	008				0.5-120 L/min, G3/4 connection
Shell material	S				SS316L
	A				Aluminum
Temperature		T1			-30°C...+80°C standard model
		T2			-30°C...120°C
		T3			-30°C...160°C
Pressure		L			50 Bar
		H			400 Bar
Accuracy				1	±0,5 F.S
				2	±0,2 F.S
Output				P	Pulse
				A	4-20 mA
Display				N	None
				B	BAB212 (remote)